

ATT #EX3253 A FOR
R.H. END. (SHOWN)
ATT #EX3253 A FOR
L.H. END. (OPP. HAND)

SHAFT 2-EX312Z

SHIFTER FORK
1-EX322Z

COVER
1-EX353Z

1-EX332Z

3-EX317Z

2-EX317Z

3-EX317Z

CARBURETOR SOCKET NO
4-28 x 1/2, 1-LW

MACH BOLT 1/2" DIA
X 1 1/2", 1-RH
CUT FROM 7"

CARBURETOR SOCKET NO
3/16-1/8 x 1" 1-LW
(4 PER CYL.)

1-EX332Z

CYL. BLOCK
ATT EX3123A
LAGGING COVER
ATT EX3232A

COVER ATT.
EX3532A

CRANKCASE
DNG EX3274

OIL INLET
NPT

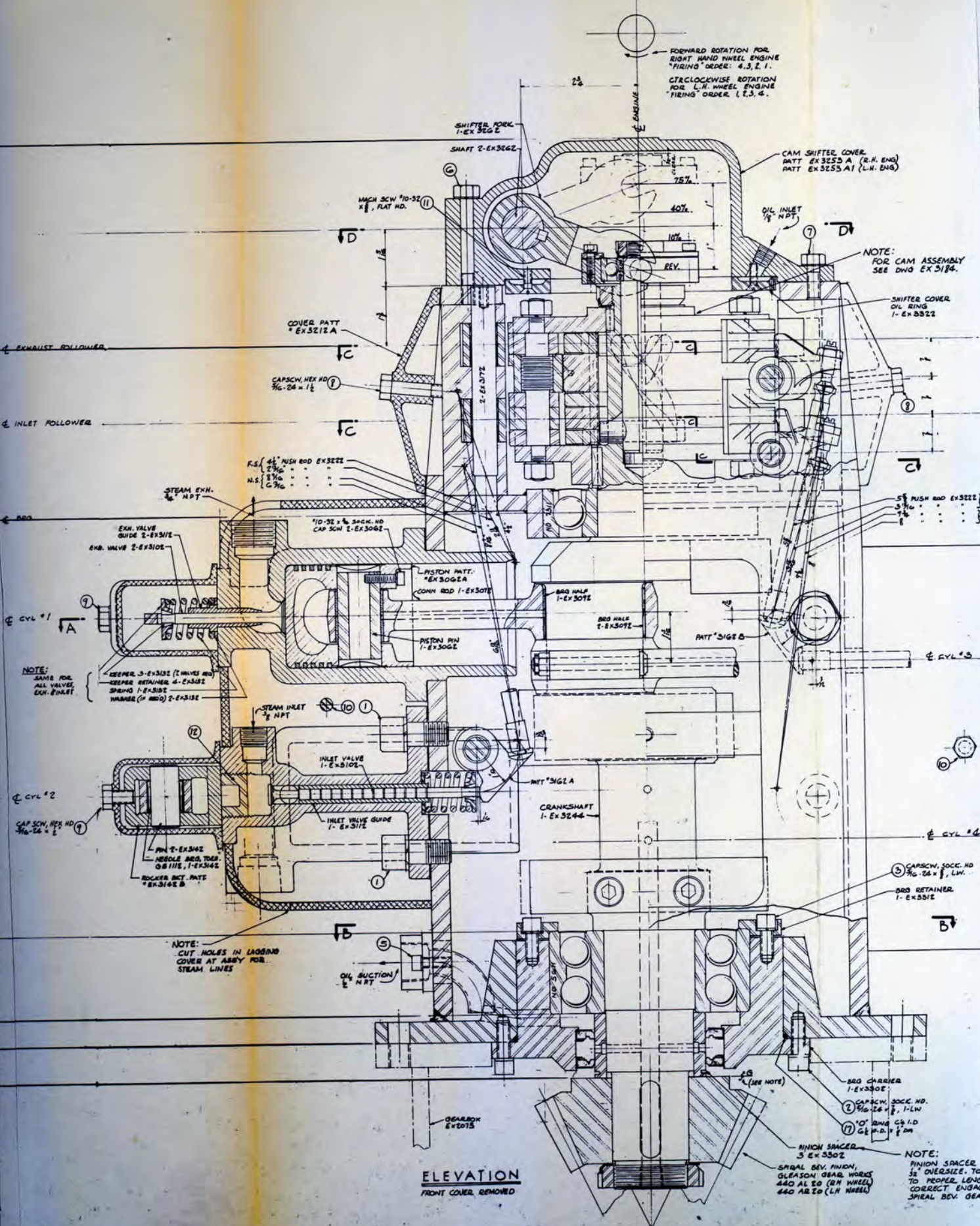
GEARBOX
EX2073

1-EX330Z

ELEVATION

20.15 OVERALL

2.16
7.16
1.6
2.6
4.1
2.6
4.1
5.1
1.6 (each)
7.1
5.1
1.6



FORWARD ROTATION FOR
RIGHT HAND WHEEL ENGINE
"FIRING" ORDER: 4, 3, 2, 1.
CLOCKWISE ROTATION FOR
L.H. WHEEL ENGINE
"FIRING" ORDER: 1, 2, 3, 4.

← EXHAUST FOLLOWER

← INLET FOLLOWER

← BRG

← CYL #1

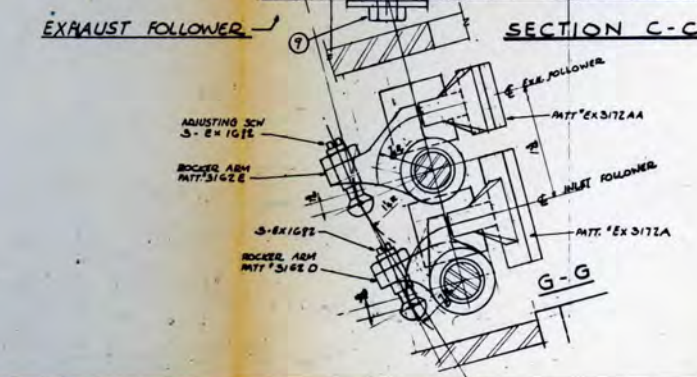
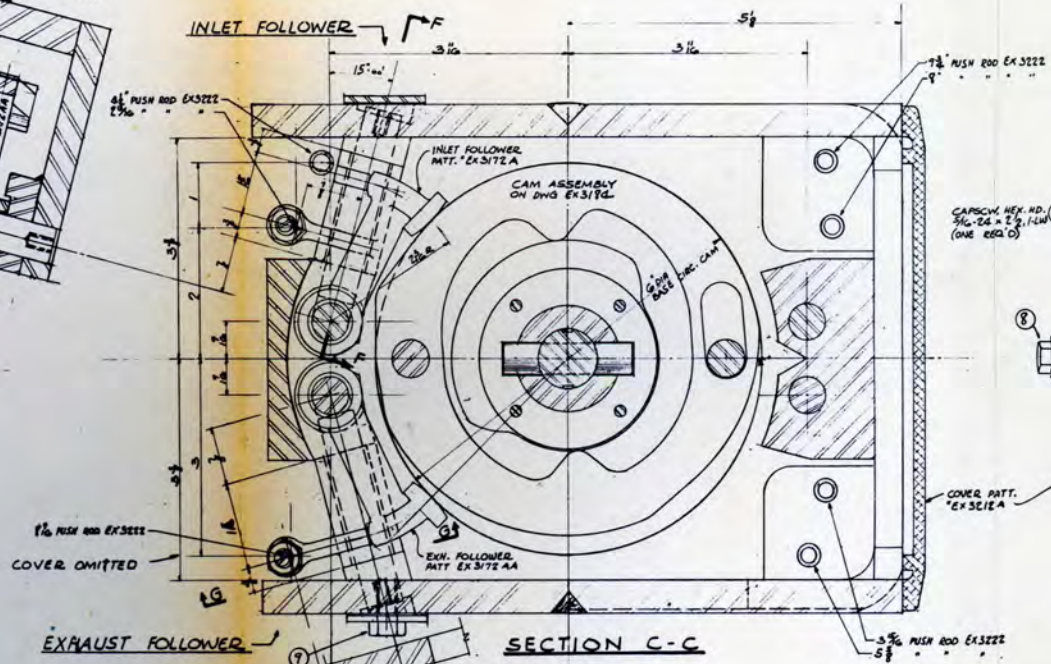
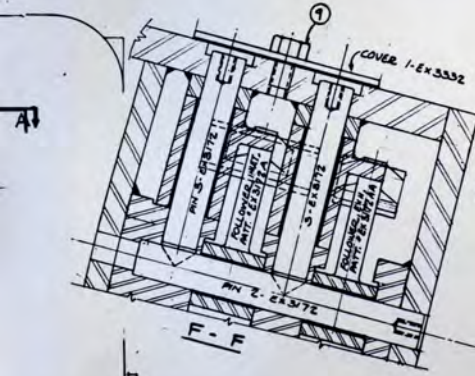
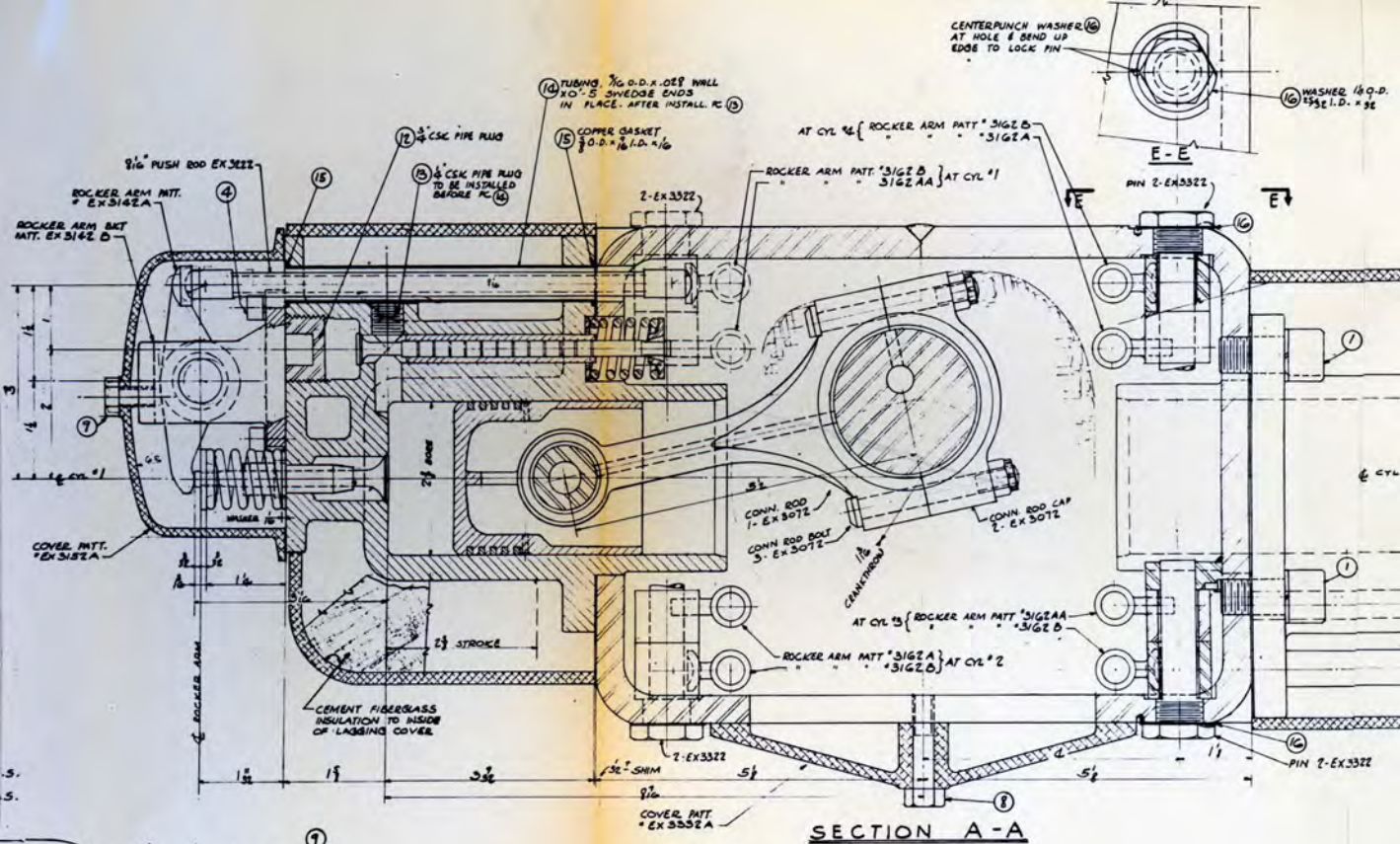
← CYL #2

← CYL #4

ELEVATION
FRONT COVER REMOVED

← GEARBOX

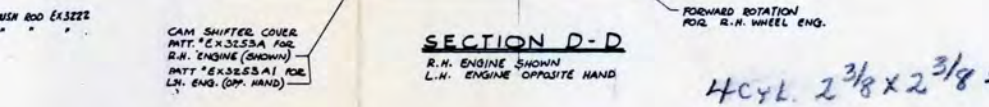
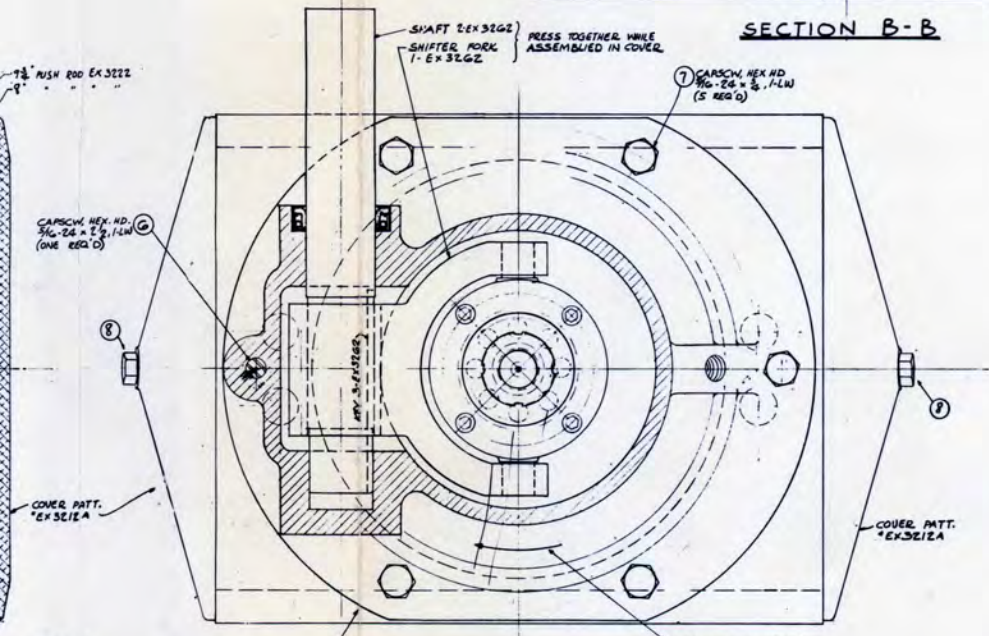
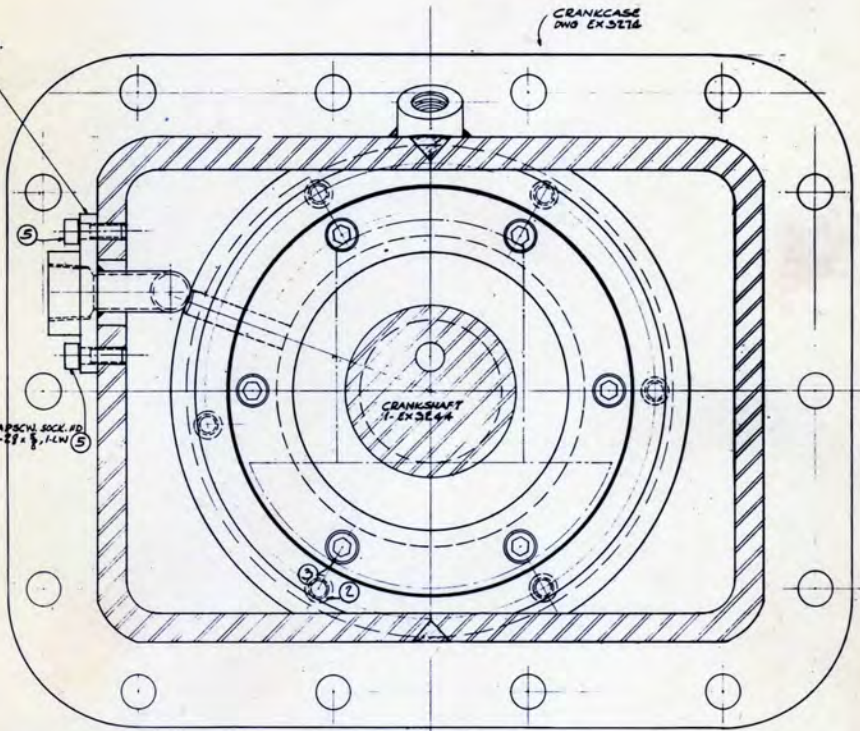
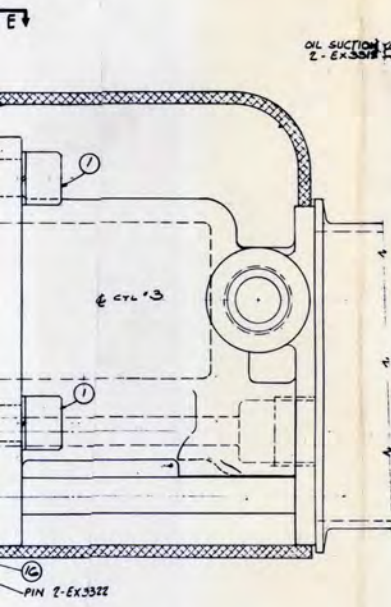
- SHIFTER FORK 1-EX 3202
- SHAFT 2-EX 3202
- MACH SCW #10-32 x 1/2 FLAT HD. (II)
- CAM SHIFTER COVER PATT EX 3253 A (R.H. ENG) PATT EX 3253 A1 (L.H. ENG)
- OIL INLET 1/8" NPT (7)
- NOTE: FOR CAM ASSEMBLY SEE DWG EX 3184.
- SHIFTER COVER OIL RING 1-EX 3522
- COVER PATT EX 3212 A
- CAP SCW, HEX HD #6-24 x 1/2 (I)
- REV.
- 5/8" PUSH ROD EX 3522
- 3/16"
- 1/8"
- 1/16"
- R.S. of 41" NICK ROD EX 3522
- 2 3/16"
- N.S. 2 3/16"
- 1 3/16"
- STEAM EXH. 1/2" NPT
- EXH. VALVE GUIDE 2-EX 3152
- EXH. VALVE 2-EX 3152
- 10-32 x 3/8" SOCK. HD CAP SCW 2-EX 3002
- BRG HALF 1-EX 3072
- CONN ROD 1-EX 3072
- PISTON PIN 1-EX 3002
- BRG HALF 2-EX 3072
- PATT 3162 B
- NOTE: SAME FOR ALL VALVES EXH. & INLET
- KEEPER 3-EX 3152 (2 VALVES REQ)
- KEEPER RETAINER 4-EX 3152
- SPRING 1-EX 3152
- HANGER (1/4" DIA) 2-EX 3152
- STEAM INLET 1/2" NPT (10)
- INLET VALVE 1-EX 3152
- INLET VALVE GUIDE 1-EX 3152
- CRANKSHAFT 1-EX 3244
- PATT 3162 A
- BRG CARRIER 1-EX 3302
- CAP SCW, SOCK. HD #6-24 x 1/2, LW. (3)
- BRG RETAINER 1-EX 3302
- NOTE: CUT HOLES IN LAGGING COVER AT ASBY FOR STEAM LINES
- OIL SUCTION 1/2" NPT (8)
- GEARBOX EX 3073
- BRG CARRIER 1-EX 3302
- CAP SCW, SOCK. HD #6-24 x 1/2, 1-LW (2)
- 1" O.D. BRG C/P I.D. 6 1/2" P.D. x 1" AM (17)
- PINION SPACER 3-EX 3302
- NOTE: PINION SPACER FOR 3" OVERSIZE. TO BE TO PROPER LENGTH FOR CORRECT ENGAGEMENT SPIRAL BEV. GEAR



UNGRADED
 GROUND
 FOR
 ALIGNMENT OF
 ENTIRE ASSEMBLY.

LISTS:
 X-30GZ (FOR THIS SHEET)
 OTHERS: - X-30E5, 31GZ, 31R4
 3244, 32E3, 3274, 3352.

WASHER 1/8" O.D.
 1/16" I.D. X .36



$4 \text{ CYL. } 2 \frac{3}{8} \times 2 \frac{3}{8} = 42.08 \text{ Cu in.}$

Figure 18.